

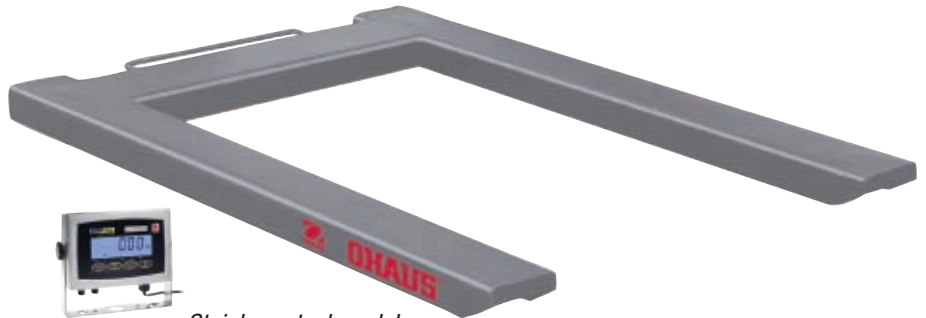


# VE Series

U-Frame Pallet Scales



*Painted steel model  
shown with T31P indicator*



*Stainless steel model  
shown with T31XW indicator*

## **Affordability, Durability, OHAUS Quality & Value**

The OHAUS VE Series U-Frame Pallet Scales are the value solution for your dry or washdown weighing needs in industrial and commercial applications. Their high-quality material and construction are designed for years of trouble-free service. Together with mobility features such as lifting handle and front-mounted rollers, the OHAUS VE Series U-Frame Pallet Scales offers a unique combination of convenience, value and quality that your company can depend on.

### **Standard Features Include:**

- Popular 1500kg capacity model
- Painted carbon steel and stainless steel models with handle and rollers for convenient lifting and relocation
- Two rugged OHAUS indicator models:
  - T31P indicator features a high-impact ABS housing with key-holes on the rear cover for wall mounting
  - T31XW indicator features a 304 stainless steel IP66 housing
- Four OIML R60 approved IP67 alloy steel load cells
- Four load cell mounted feet, self-swiveling ball-in-cup design
- IP65 dust and water immersion protected stainless steel junction box
- Available second stage verified scale models 1:3000e with OHAUS indicators
- OHAUS indicators featuring backlit LCD displays with high-visibility 25mm high digits, Five weighing units (kg, g, lb, oz, lb:oz), RS232, rechargeable lead acid battery operation and piece counting function

# VE Series U-Frame Pallet Scales

## Specifications

Platform Models	VE1500P	VE1500PW
Net Weight	51kg	47kg
External Dimensions	1260L x 840W x 90minH mm	
Scale Models	VE1500P31P	VE1500P31XW
Scale Models , Class III, EC Type approved, 2nd Stage	VE1500P31PM	VE1500P31XWM
Platform Material	Carbon steel, painted	Stainless steel, sand-blasted
Capacity x Readability	1500 kg x 0.5 kg	
Approval Resolution	1:3000e	
Maximum Central Load	2250 kg	
Operating Temperature / Humidity	-10°C to 40°C / 0% to 95% relative humidity, non-condensing	
Load Cell	4 x IP67 alloy steel, shear beam, OIML C3	
Load Cell Capacity Emax	1000kg	
Output Impedance / Excitation Voltage	350 ohm ± 3.5 ohm / 5V~15V, DC/AC	
Feet	2 x front edge rollers with 4 x self-swiveling ball-in-cup design with rubber bottom	
Junction Box	Rear-access, IP65, 304 stainless steel, 194L x 130W x 45H mm, with 5m long cable	
Other Features	Integrated lifting handle, external level indicator	
Indicators	T31P, ABS plastic	T31XW, 304 stainless steel IP66
Weighing Units	kg, g, lb, oz, lb:oz	
Display	Backlit LCD, 25 mm high, 6-digit, 7-segment	
Interface	Built-in RS232C, bi-directional	
Power	AC adapter	Universal switching power supply
Battery	Internal rechargeable sealed lead acid battery (100-hour typical operation on full charge)	
Other Indicator Features	Piece Counting 1d min APW, Geographical gravity adjustment, Environmental filtering	

## Options and Accessories

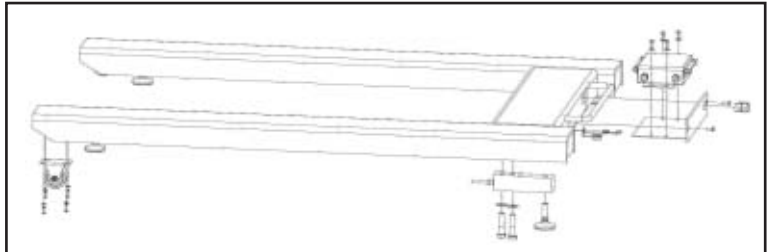
## Ohaus Number

Wall mount bracket kit, T31P .....	80251747
Wall mount bracket kit, T31XW .....	80251748
Foot plate kit, VE painted steel .....	72198344
Foot plate kit, VE-W stainless steel .....	72198345

## Approvals:

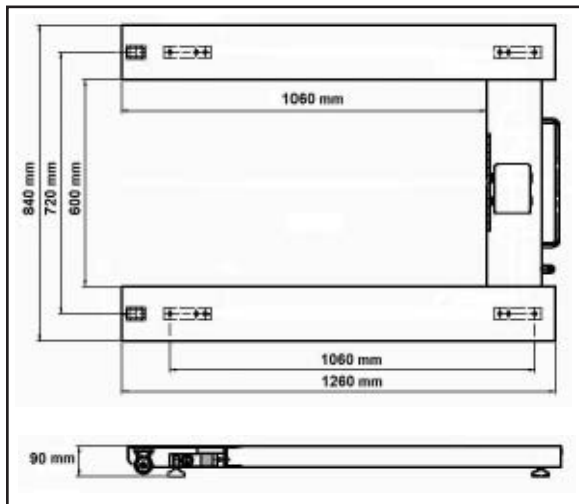
- Safety and EMC: EN60950, EN61326, FCC, CE, CULUS
- EC Type Approval:
  - T31xx Series Indicator: TC7085 / T5980
  - Load Cell: OIML R60 PTB D09-03.19
- Quality: Ohaus quality management system registered to ISO 9001:2000

## Construction and Other Features



Handle and front-mounted rollers for convenient lifting and relocation of the scale

## \*Outline Dimensions



## Featured Components



[www.ohaus.com](http://www.ohaus.com)

\* ISO 9001:2000  
Registered Quality Management System

80774342 © Copyright Ohaus Corporation

